

# **Double Room**

**Our double rooms can be booked in different locations and diversely furnished.**

## **Equipment**

On ground floor we have four double rooms next to eachother. Park view and automatic blinds included.

Besides a double bed, these rooms are furnished with two comfortable chairs, a small table and a sufficiently large wardrobe.

One of our double rooms is designed to be accessible to disabled people.

Our small double room can be booked for single use.

On first floor we have our most flexible double room.

It includes a couch and a coffee table aswell as a modern bathroom with window.

For a short stay, the couch can be used as a bed for one smaller child.

•



•



•



•



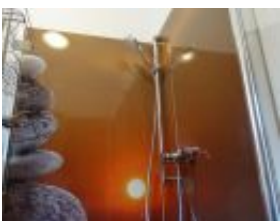
•



•



•



•



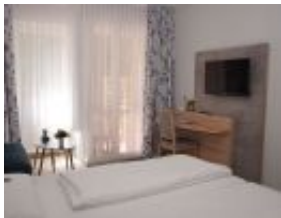
•



•



•



[Standard single-room](#)

[Comfort single-room](#)

[Three-bed-room](#)

[Four-bed-room](#)

[Family-room](#)

[Prices](#)

[AGB](#)

[Booking](#)